



Installation Instructions

(For indoor use only)

**PLEASE READ COMPLETELY
PRIOR TO INSTALLING!**

Watch our installation video
at myurbio.com/perchinstallation

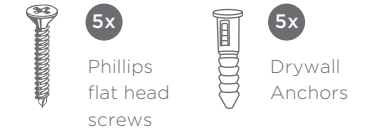
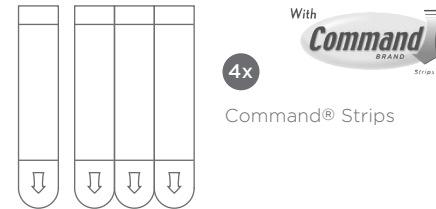
Meet Perch!

Perch is a magnetic wall organizer, displayer, even gardener. Setup is a snap, and super strong magnets hold the containers firmly in place until you're ready to rearrange. Organize your home office, bathroom, kitchen, studio, and more. Whatever the space, Perch can help.

Visit us!
myurbio.com/perch

Hardware Included:

(For each metal wall mount)



CAUTION: DO NOT use with wallpaper. May not adhere well to vinyl surfaces. DO NOT use for antiques, heirlooms, or other valuable or irreplaceable items. DO NOT hang items over beds.

NOTE: Apply to surfaces above 50°F (10°C). Adhesive could lose adhesion above 105°F (40°C).

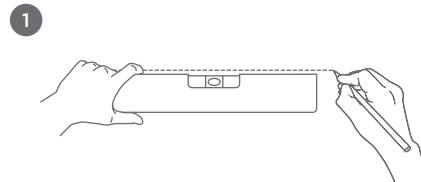
3M and Command are trademarks of 3M © 2015.

IMPORTANT: Failure to follow instructions carefully may cause damage! Save instructions for removal.

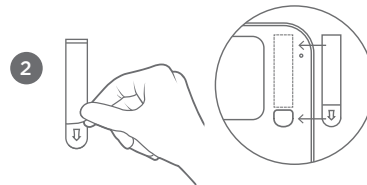
CARE AND CLEANING: Wipe containers and plates clean with a damp cloth.

Installing Perch with Command® Strips:

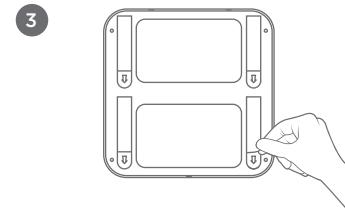
(For smooth surfaces only)



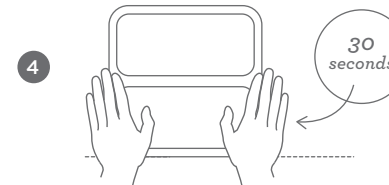
1 Draw a level line on a clean, dry wall. Clean surface with rubbing alcohol, wipe gently, let dry. Do not use household cleaner.



2 Remove red liner from adhesive strips and apply to bracket on the back of Wally. Adhesive strips should align with outlined area in the 4 corners with tabs pointing down. Press and hold each for 30 seconds.



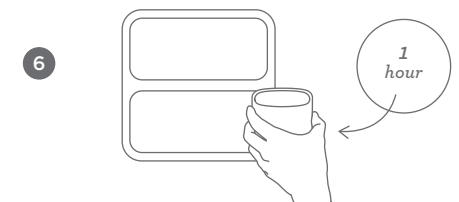
3 Remove black liner from the back side of each adhesive strip. Make sure plate and bracket are securely snapped together.



4 Align bottom of Wally to level line on wall. Press wall mount to wall and firmly press over each of the 4 strips for 30 seconds.



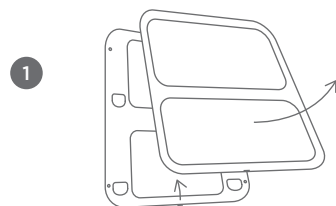
5 To install additional wall mounts, align edge of mount with previously installed wall mount along level line and repeat steps 2-5.



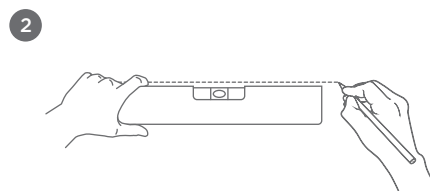
6 Wait one hour before attaching Perch container to allow adhesive to set. Add Perch containers and fill to your heart's content!

NOTE: Please refer to packaging or website for weight capacity of each container.

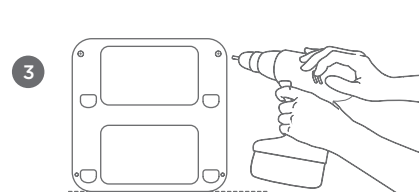
Installing Perch with Screws:



1 Separate Wally by pulling the bottom bracket tab up and out of the notch on the bottom of the plate.

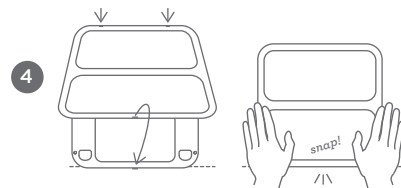


2 Draw a level line on a wall.

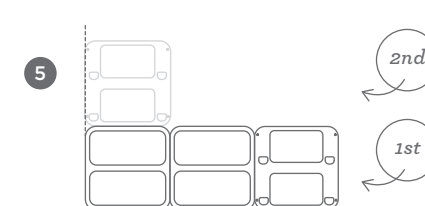


3 Align bracket to level line on wall and screw in.

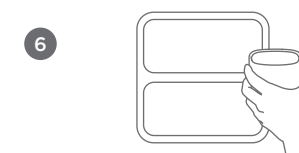
NOTE: If mounting to drywall, use the wall anchors provided. Pre-drill the holes with 1/4" drill bit and push in anchor flush to the wall before screwing in bracket.



4 Attach plate to bracket by hooking the tabs on the top of the plate into the slots on the top of the bracket and snapping down into place.



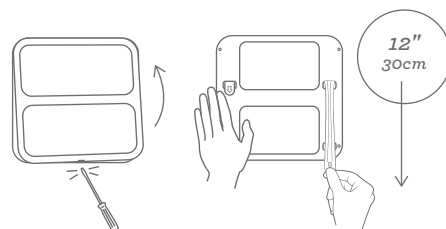
5 To install additional wall mounts, align edge of bracket to previously installed wall mount along level line and repeat steps 1-4. If installing multiple rows of wall mounts, you must fully install one row at a time beginning with bottom row first.



6 Add Perch containers and fill to your heart's content!

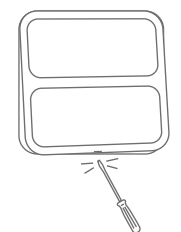
NOTE: Please refer to packaging or website for weight capacity of each container.

Removal Instructions (Command® Strip Installation)

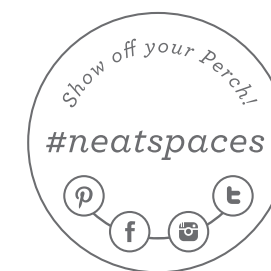


To remove, use a flat head screwdriver to press in tab located on bottom of bracket. This will release the plate from bracket. Grab exposed tabs and slowly stretch each Command® Strip straight down along the wall at least 12". Do not pull strips toward you. If adhesive strips break during removal use dental floss to separate bracket from wall and repeat steps for removal.

Removal Instructions (Screw Installation)



To remove, use a flat head screwdriver to press in tab located on bottom of bracket. This will release the plate from bracket. Unscrew bracket from wall and remove wall anchors (if applicable).



myurbio.com/perch

perch™ by urbio.
neat spaces



Please be kind. Recycle.